

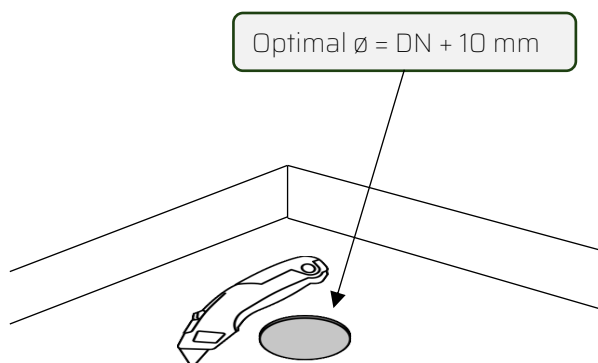
# WATERPROOFING PENETRATION WITH INTEGRATED SLEEVE

# 2KO

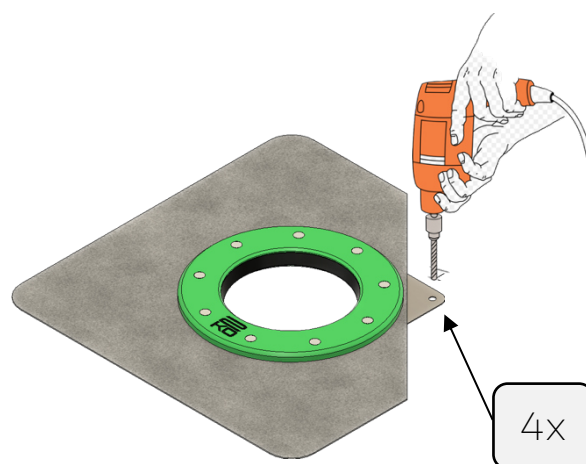
Date of issue 07/2024

## ASSEMBLY MANUAL

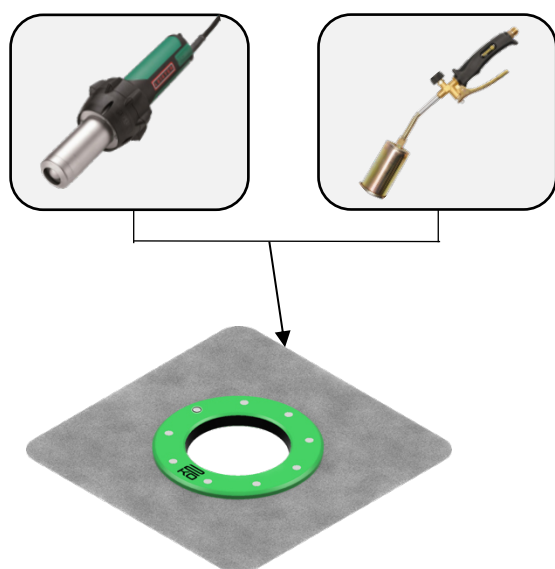
### 1 - Installation preparation



### 2 - Anchoring

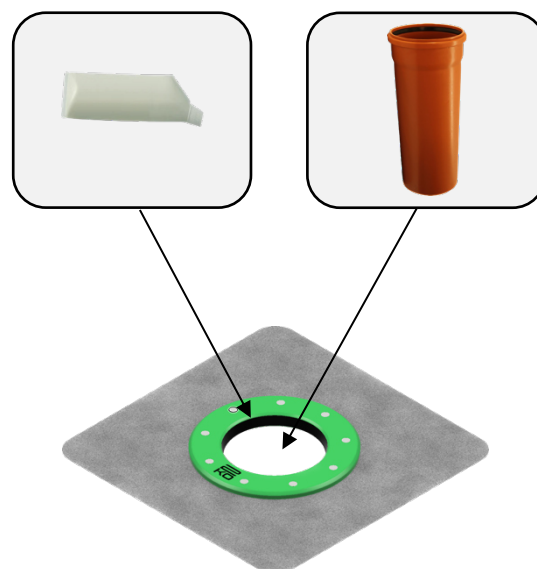


### 3- Waterproofing connection



### 4.1.- Application of lubricant to the seal

### 4.2.- Pipe inserting



# DVAKO

Advanced technical  
development

